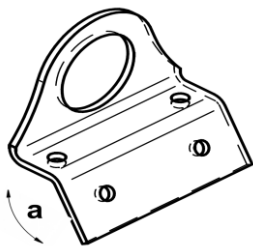
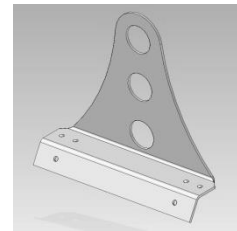
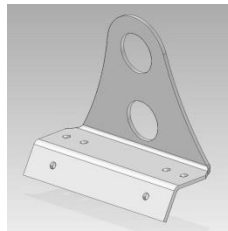
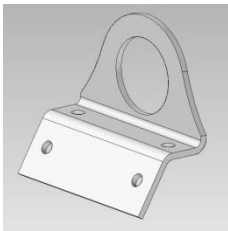


Single-, double- and triple-tube snow retention system for Trapezoidal- and sandwich metal roofs

Version:

Aluminum	AlMgSi, thickness 3 mm, holder for single-tube snow retention system, incl. 4 self-drilling stainless steel screws A2 5,5 x 25 mm with sealing disc	Article-No.: LA-1891
Aluminum	AlMgSi, thickness 3 mm, holder for double-tube snow retention system, incl. 4 self-drilling stainless steel screws A2 5,5 x 25 mm with sealing disc	Article-No.: LA-1892
Aluminum	AlMgSi, thickness 3 mm, holder for triple-tube snow retention system, incl. 4 self-drilling stainless steel screws A2 5,5 x 25 mm with sealing disc	Article-No.: LA-1893

Illustration:



Description:

Holder for tubes in aluminum for trapezoidal- and shoulder sheet roofs and also for sandwich metal roofs for mounting on the high sick from the roofing.

Available as single-, double- and triple-tube holder.

Special design suitable for your roof profile.

If you want to order this holder, we need the angle (a) from the profile and the web width from the high sick.

Packing unit: No

Mounting:

Place one holder on the right and one on the left side of the verges. Span a string in order to get a straight line. After that you screw on all holders. Between the holders the distance be allowed max. 75 cm resp. 29.53 inches. Now induct the tube (max. outer diameter 32 – 33 mm). You also can put the needed holders on the tube before mounting.

With our tube connector you connected the tubes and get a better stable.

Tighten self-drilling screws by a drilling machine with depth stop. **Attention: do not over tighten!** If the sheet is thinner please use narrower screws.

Single-, double- and triple-tube snow retention system for Trapezoidal- and sandwich metal roofs

Mounting:



Important note:

If you have decided to install a double-tube snow retention system, it is indispensable to install additional single-tube snow retention rows too.

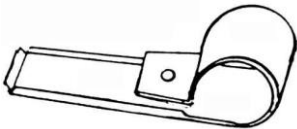

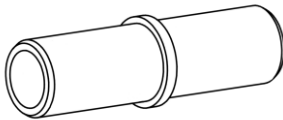
Notes for executions:

Determining are the local and usual climatic conditions, zones of snow-load by DIN 1055-5 (German standard), as well as the roof pitch, its designation and the dimensions of the roof-sheets. These guidelines are necessary for mounting, calculation, arrangements of holders and fixation of the snow retention system. Additionally you have to consider all governmental orders, if available.

If you mount a snow retention system, you have to consider the increased load on the roofing-construction and on the trapezoidal applications.

Please contact us if you have any further questions or if you need any assistance.

Additional equipment for snow retention system on trapezoidal- and sandwich metal roofing:

Snow stop, for trapezoidal- and shoulder sheet roofing. In aluminium. For profile depth of 85 mm and 135 mm available.	Tubes with a wall thickness of at least 2 mm	Tube connector
		

Please note our large product range around metal roofs: snow retention systems, step brackets, solar holders and our program about clips. Further information you will find on our homepage.